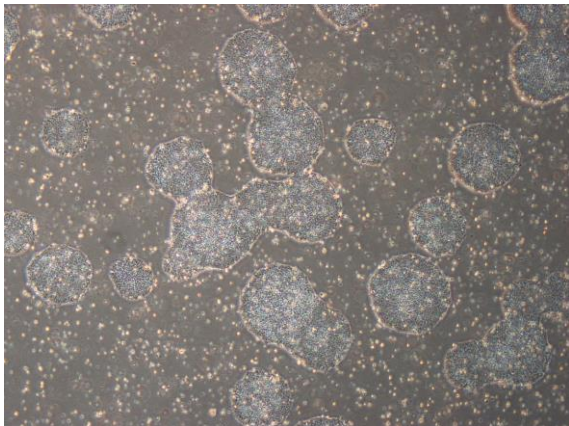


【 CiRA-j-1605 】 Morphology of iPSC colonies

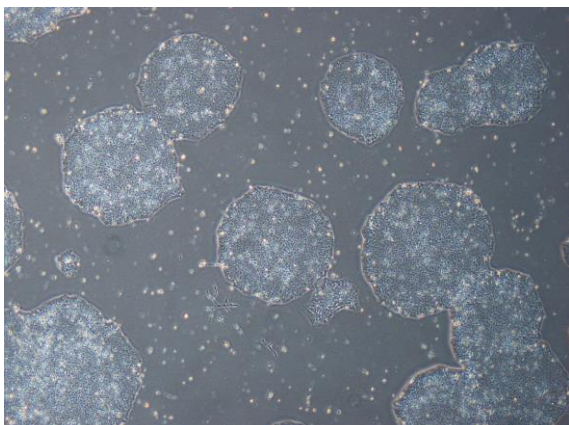
CiRA-j-1605-A: passage-3



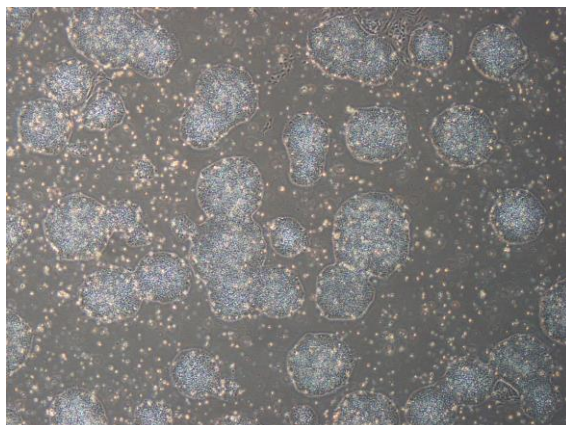
CiRA-j-1605-B: passage-3



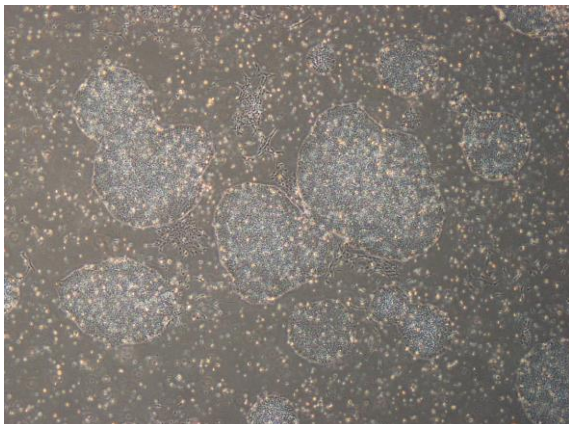
CiRA-j-1605-C: passage-3



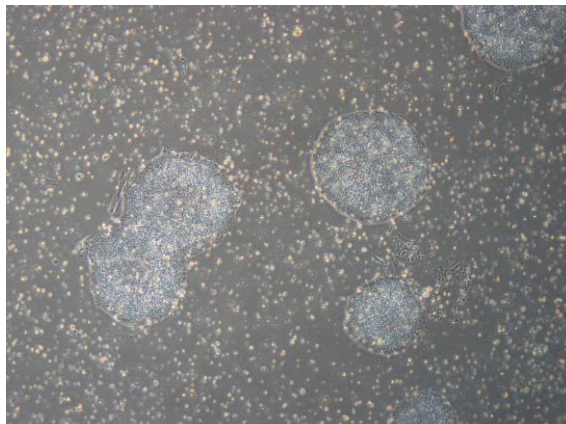
CiRA-j-1605-D: passage-3



CiRA-j-1605-E: passage-3



CiRA-j-1605-F: passage-3



(All images were captured at 4x magnification)